

Covid-19 – Long Term Travel Impact Research Early Results – Summary of Key Points

Prof Graham Currie FTSE
Public Transport Research Group
Monash Institute of Transport Studies
Monash University, Australia



Monash Uni is running a research program on the Long Term Impacts of C-19 on passenger travel – Phase 1 is a series of interviews in Melbourne (Complete) Phase 2 is a Panel Survey (In Planning)

C-19 Travel Impacts – Online Interview Survey

- **Objective:**
 - provide qualitative detailed narratives of how C-19 shutdown has impacted the lives of respondents and to provide inputs to long term forecasting of impacts.
- **Aims:**
 - a. Understand personal experiences of C-19 Shutdown on life, work and travel – notably differences between pre-shutdown and shutdown (in their words)
 - b. Ask for respondents personal views on how life, work and travel might change in a post-C-19 shutdown – will anything have changed? (in their words)
 - c. Explore specific issues which might affect long term travel with respondents (in their words)
- **Approach**
 - 18 interviews - 40 mins - online/by phone

Table 1 – Sample Frame – Online Interviews

Personal Income	Regions of Melbourne								
	Inner			Middle			Outer		
	Age			Age			Age		
	Low*	Medium	High	Low	Medium	High	Low	Medium	High
Low	1 ²	-	1	1 ²		1	1 ²		1
Medium	1	1 ²		1	1 ²		1	1 ²	
High		1	1 ²		1	1 ²		1	1 ²

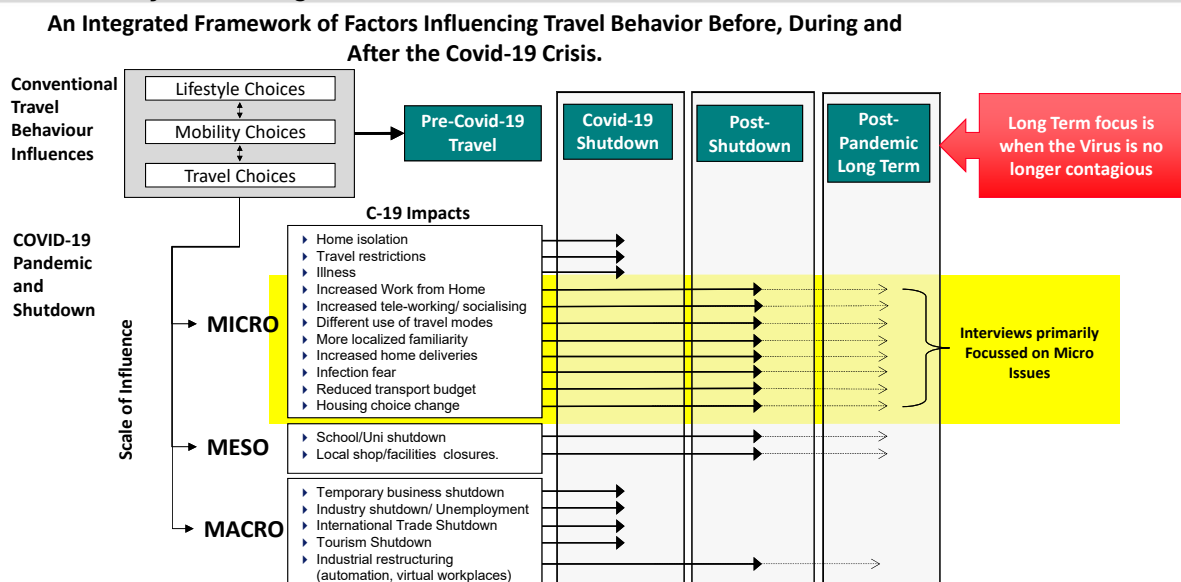
*No surveys are undertaken of anyone aged under 18

²Respondents who used Public Transport in Melbourne equal to and also more frequently than 1-2 days a week

Long term impacts in the case means POST-PANDEMIC ; when there is no longer a risk of infection – it DOES NOT concern post shutdown



Key to the research is a framework to understand lasting travel impacts of C-19; Micro impacts are explored in the surveys including the interviews



Note: This framework is developed by the research team from a review of previous research literature and also from a workshop with staff from the Victorian Department of Transport

Interviews explore 4 issue sets – Pre-Shutdown , Shutdown, Post-Pandemic and Specific Issues which might affect long term travel (from the framework)

DISCUSSION GUIDE – Areas for Questioning

A. Pre - Shutdown	<ul style="list-style-type: none"> i. Weekday activities ii. What did you do (work, study, retired etc) iii. How did you get around 	D. Exploring Specific Long Term Impact Issues CONTINUED
B. Shutdown	<ul style="list-style-type: none"> i. [OPEN] How affected ii. How affected activities iii. How affected getting around 	
C. Post - Pandemic	<ul style="list-style-type: none"> i. [OPEN] How do you expect what you do and how you get around will change when the virus has gone? ii. How affected activities iii. How affected getting around iv. Will C-19 change getting around in future; why. how 	
D. Exploring Specific Long Term Impact Issues		
Working from Home <ul style="list-style-type: none"> i. During shutdown - WFH? Doing More? ii. Post Shutdown – how will this change number of times Why? 		Local Travel <ul style="list-style-type: none"> i. During shutdown – activities more local? What? How do you get around? ii. Post Shutdown – will you do more local activities - Why?
Tele-Video Conferencing <ul style="list-style-type: none"> i. During shutdown - Involved for work, study social? Doing More? ii. Post Shutdown – how will this change number of times Why? 		Home Deliveries <ul style="list-style-type: none"> i. During shutdown – had more? What? Why? ii. Replaced out of home travel? iii. Post Shutdown – how will this change deliveries - Why?
Travel Modes <ul style="list-style-type: none"> i. During shutdown changed how get around ? Doing More? ii. Post Shutdown – how will this change getting around, How? Why? 		Residual Public Transport Fear <ul style="list-style-type: none"> i. [OPEN] After shutdown – will you use PT? Why? ii. When infection risk gone – will you have concerns about infection on PT in future? How will this affect PT use? Why?
		Impact of Lower Income <ul style="list-style-type: none"> i. After shutdown – will income be less? Why? ii. How will this affect going to activities? iii. How will this affect how you get around?
		Car Ownership <ul style="list-style-type: none"> i. After shutdown – will the C-19 Crisis affect how you own and use a car? How? Why?
		Residential Housing/Location <ul style="list-style-type: none"> i. After shutdown – will the C-19 Crisis affect where you want to live? Where? Why?

Post-Pandemic; EVERY respondent said they would do activities and travel the same way they did Pre-Pandemic

Preliminary Results

C. Post - Pandemic	How do you expect what you do and how you get around will change when the virus has gone?
---------------------------	---

Go back to normal

No get back to normal

Will drift back into same as we used to

I'll travel by public transport again

Not much change

Go back to normal

Go back to normal

Just go back to normal

It will all be the same; don't expect to change anything

Will soon go back to how it was

Expect it will go back to normal

Go back to how it was before the virus came about

Post-Pandemic; the only important travel issues are work/study from home which is likely to have a longer term impact – but impact scale will be small – other impacts are minor

Preliminary Results

D. Exploring Specific Long Term Impact Issues	When the Virus has gone – how will this change how you get around?		
Working/Study from Home	Affects 6/18	Half – will go back to work/study	Half – would like to do some W/S FH in future boss said it was good; it makes life so much easier; im going to try and negotiate it
Tele-Video-Phone Conferencing/Meeting	Affects 15/18	About a third will continue Post-Pandemic; most only a little	Will continue to use telehealth ; quite like it means I don't have to travel to the doctor
New Travel Modes/Patterns	Almost all Travel Differently during shutdown	Little Post-Pandemic change in travel expected	Would like to walk more for health but expect I'll go back to before the virus
More Localised Travel	Most haven't changed range of local travel	Few expect to be more local in travel	Will go back to same travel as before shutdown
Impact of home delivery - online shopping	10/18 had more home deliveries during shutdown	Only 2 expect to continue post pandemic – small travel impact	Prefer eating out
Impact of Lower Income	3/18 had some income impact in shutdown	None expect a long term impact on activities or travel	No, income should return to normal
Car Ownership	None expect a long term impact on car ownership/use		
Residential Housing Preference & Location	None expect a long term impact on housing/location	I don't think there will be any affect. Quite used to living in the city center	I never liked high density inner living; this makes me think im right (outer area resident)

Post-Pandemic; EVERY respondent using public transport Pre-Pandemic said they would use public transport Post-Pandemic; occasional PT users also agreed

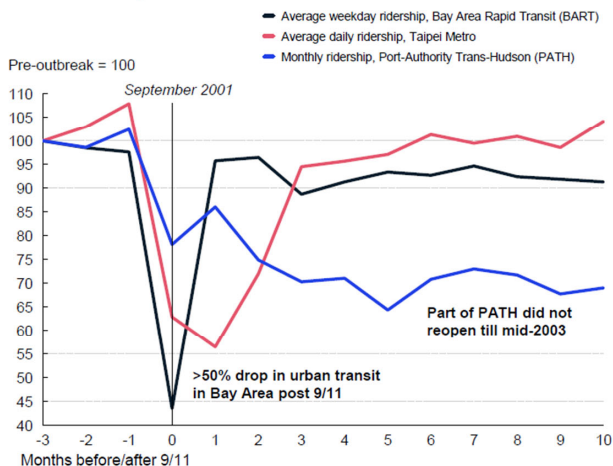
Preliminary Results

D. Exploring Specific Long Term Impact Issues	Post Pandemic will you use public transport?		
	Yes	Yes	Yes no problem with it
	Yes I would	Im not scared to use public transport ; I use trams even now	Yes will use public transport
			Yes
			See no reason why not; yes
			Yes I have no choice
D. Exploring Specific Long Term Impact Issues	Post Pandemic will you have concerns about infection on public transport?		
Majority – No concern – some noted concern	No more than usual; we have the annual flu concern but not a problem	A little apprehensive but no not real concerns; have to have a bit of confidence when things go back; ill be careful; get a flu shot	
	As long as risk has gone ill be ok		

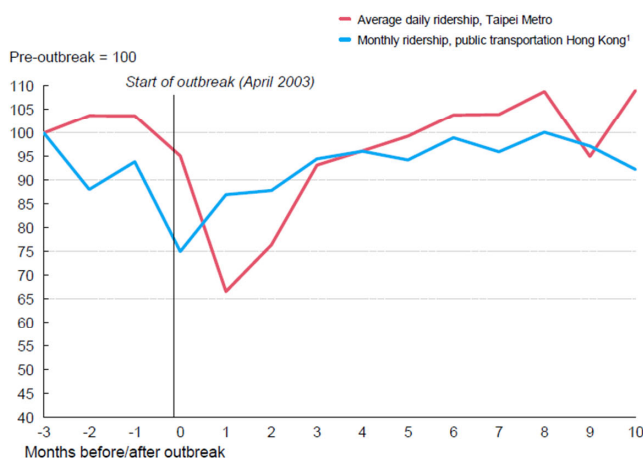
This matches findings from SARS/Safety shock impact on mass transit ridership – recovery within 3-6 months of crisis start – no suggestion of residual fear impact (but these events were relatively short term)

Impact of historical crises on urban transit ridership

Effect of safety crises – 9/11



Effect of health crises – SARS 2003



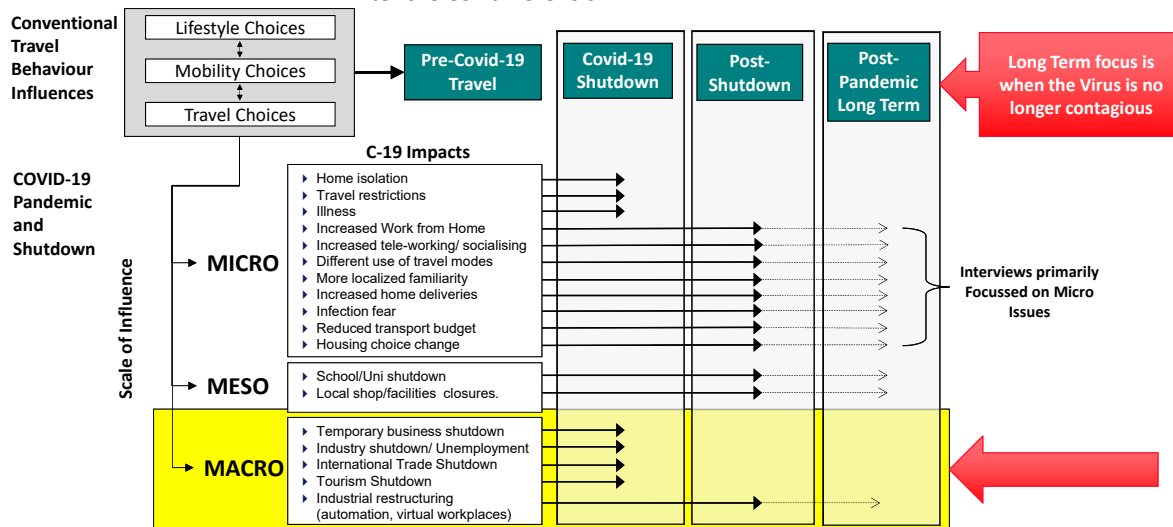
1. Includes various modes of transportation, such as bus, rail, and ferry; does not include taxi

Source: Bay Area Rapid Transit, Taipei Metro, New York State Open Data (data.ny.gov), Hong Kong Census and Statistics Department

McKinsey & Company 8

MACRO level Impacts depend on recovery – the world has had much bigger pandemics and economies have changed but always recovered

An Integrated Framework of Factors Influencing Travel Behavior Before, During and After the Covid-19 Crisis.



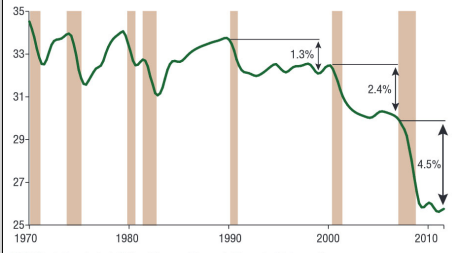
Note: This framework is developed by the research team from a review of previous research literature and also from a workshop with staff from the Victorian Department of Transport

MACRO IMPACT - We know that economic shocks have lasting employment effects for some groups – but also that total unemployment recovers over time

MACRO EFFECTS

Chart 6 Routine Jobs Declined Considerably in Past Three Recessions

Routine employment per capita (percent)



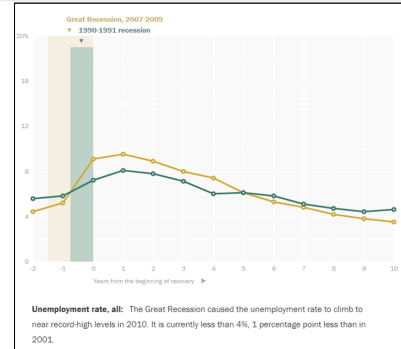
<http://www.dallasfed.org/assets/documents/research/eclett/2014/el1405.pdf>

Source: Prof Simon Wilke Dean on Monash Faculty of Business and Economics

Figure 3.7: Even with JobKeeper, Australia may face the worst unemployment rate since the Great Depression



Source: Coates, B., Cowgill, M., Chen, T., and Mackey, W. (2020). Shutdown: estimating the COVID-19 employment shock. Grattan Institute.

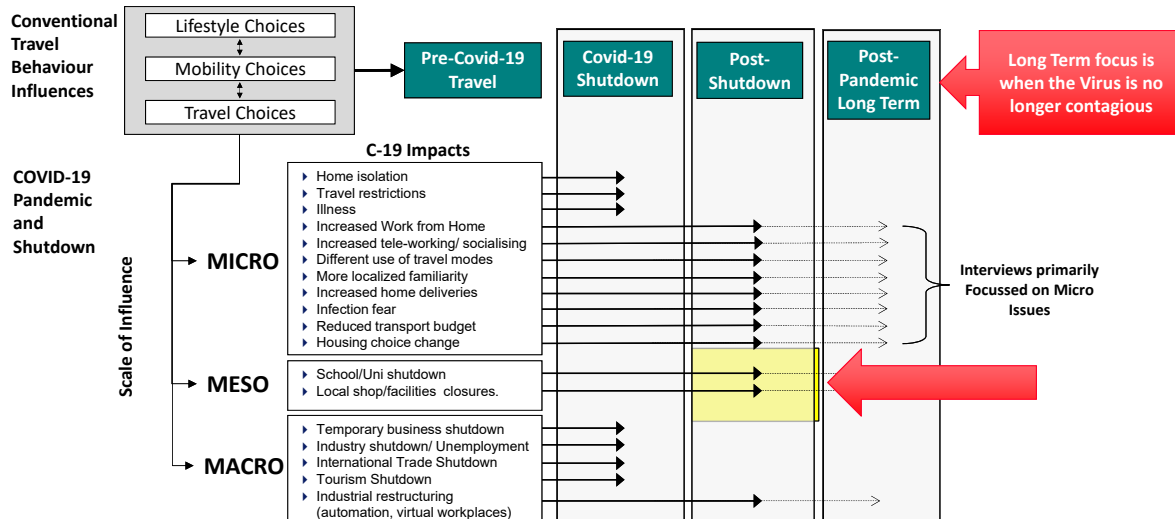


Source: RAKESH KOCHHAR AND JESSE BENNETT (2019) 'Two Recessions, Two Recoveries Compare the two longest episodes in U.S. history with our interactive' Pew Research Centre, Social and Demographic Trends Dec 31 2019.

<https://www.pewsocialtrends.org/essay/two-recessions-two-recoveries/> last accessed May 2020

MESO level Impacts – During Post-Shutdown many more behavioural changes will be imposed which will affect travel and which could have long term impacts

An Integrated Framework of Factors Influencing Travel Behavior Before, During and After the Covid-19 Crisis.



Note: This framework is developed by the research team from a review of previous research literature and also from a workshop with staff from the Victorian Department of Transport

MESO EFFECT – Post Shutdown – we need to find a new way to manage 51% of all travel to central Melbourne – how we do this and how long it lasts might affect long term travel impacts

MESO EFFECTS



Post Shutdown – Infection Still Around

Social Distancing Required

Public Transport Runs at 10-15% Capacity



Source: WSP – Public Transport and COVID-19, 2020

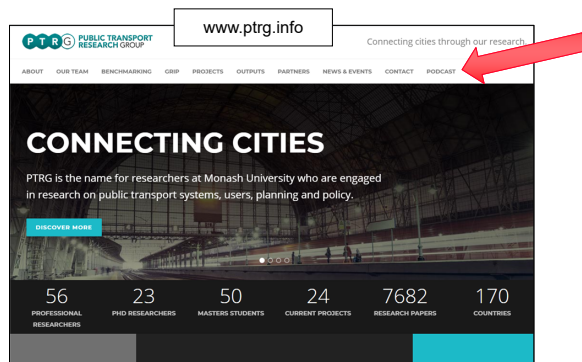
Commute To Work – City of Melbourne (000)

	Pre-Covid		Covid – Post Shutdown	
Public Transport	220	57%	22	198?
Drive a Car	117	30%	117	
Walk	22	6%	22	
Bike	15	4%	15	
Car as Passenger	11	3%	11	
Other	6	2%	6	
	385		385	
Work from home	9		9	

What do we do with these commuters?

Source: ABS Census Journey to Work 2016

A more detailed discussion of these findings is presented on the RESEARCHING TRANSIT podcast released next Monday 25th May



Long Term Impacts of Covid-19 on Travel

Released Monday 25th May