

Travel plans:

Definition, issues & effectiveness

END5035Z Management of
Transport Supply and Demand

Chris De Gruyter
Institute of Transport Studies
Department of Civil Engineering
Monash University, Australia

November 2016



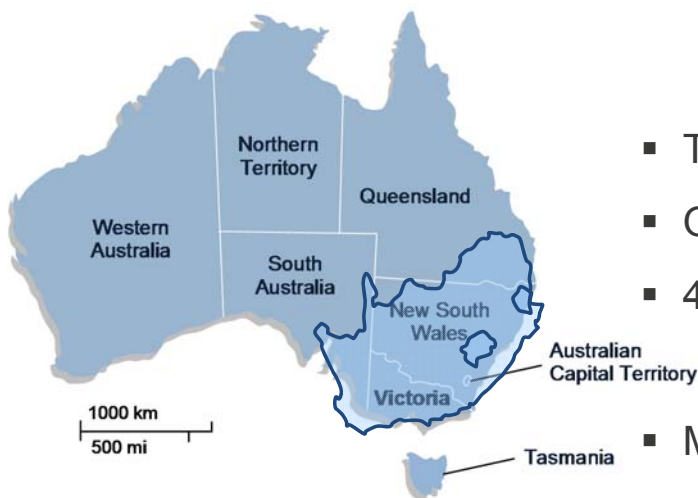
Background

Definition

Issues

Effectiveness

Geographical context

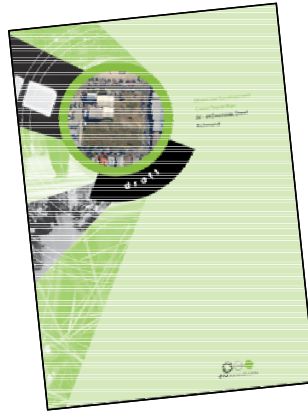
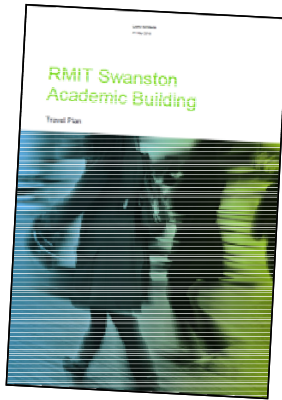


- Total population = 24 million
- Only 3 people per km²
- 45 people per km² in South Africa
- Melbourne's population = 4 million
- Largest urban tram network in world
- 70% of Melbournians drive to work

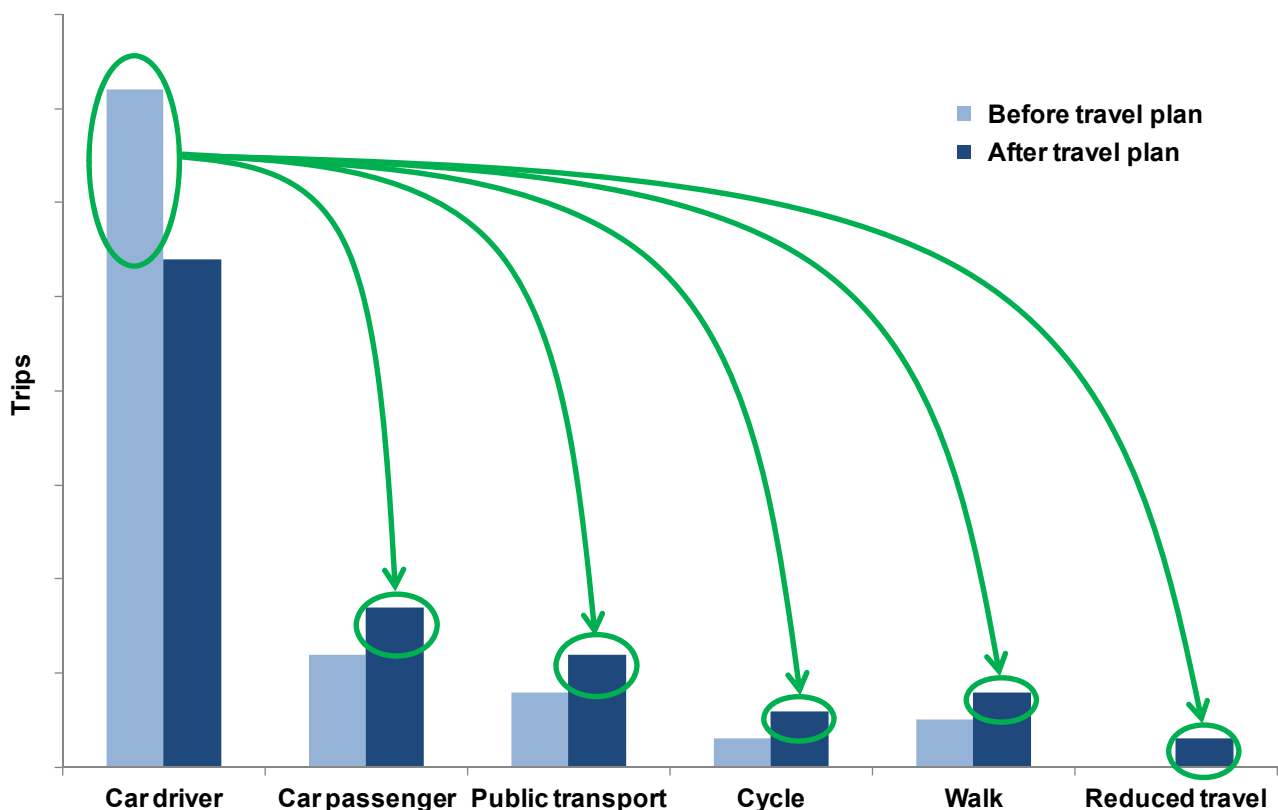


What is a travel plan?

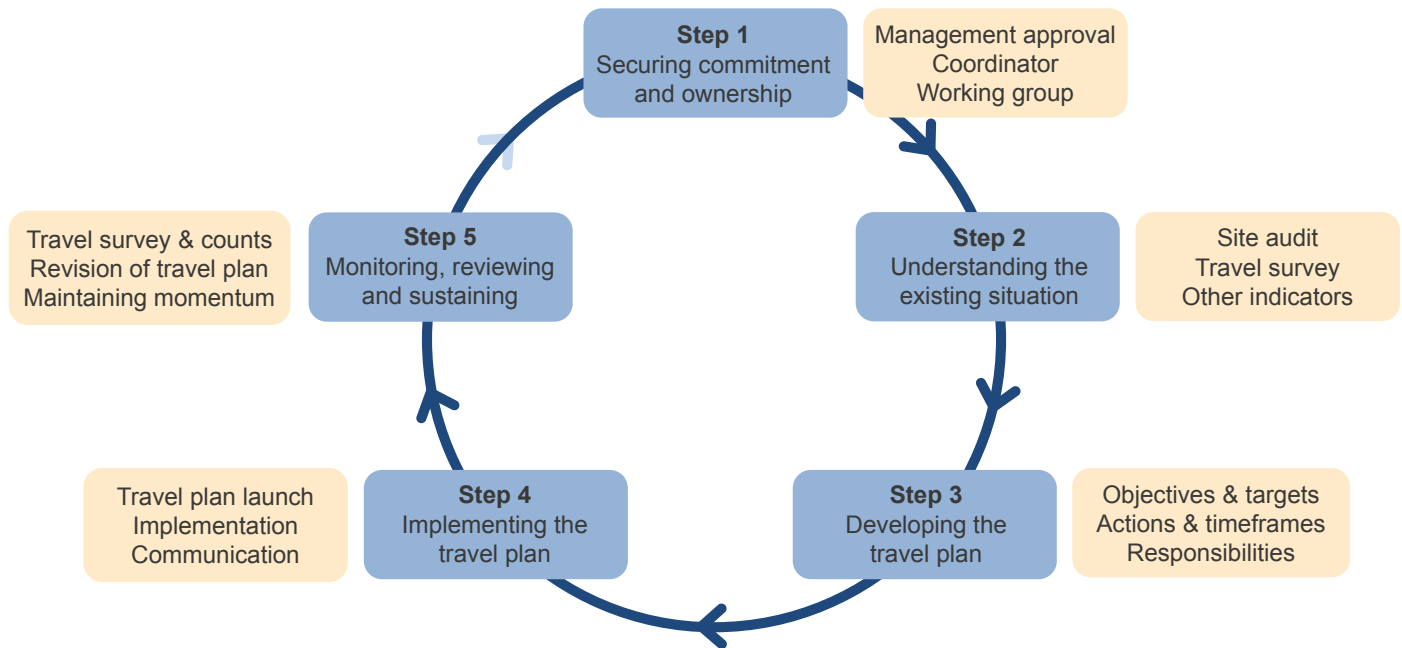
- Strategy containing a package of tailored initiatives and facilities that encourage the use of more sustainable forms of transport



- No two travel plans are the same – important to tailor to needs of site
- Travel plans can be applied to both **existing & new developments**



The travel planning process



Adapted from Howlett & Watson (2010)

Examples of actions in a travel plan

Programs

Carpool matching
Bicycle users group
Walking school bus



Information

Maps & timetables
New resident kits
Online information



Infrastructure

Bicycle parking
Showers & lockers
Car sharing service



Incentives

Discounted tickets
Carpooling parking
Parking charges



Other

Videoconferencing
Flexible working
Travel policies



- More effective travel plans use both 'carrots' and 'sticks'

- 24 apartments
- Café and shop
- 3 artist studios
- **No car parking**
- 82 bicycle spaces
- Car sharing service and membership for residents
- Annual public transport ticket for each resident





Are there any issues with requiring a travel plan for a new residential development?



Issues with requiring travel plans for new residential developments

- No legal requirement for them in Australia
- Hand-over and implementation responsibilities
- Quality of the travel plans being approved
- Expected by some to provide a 'silver bullet' solution
- Lack of monitoring and enforcement

“You can have the document there and you can stamp it, but unless it’s followed up on then it’s not worth the paper it’s printed on.” [Local govt representative]

How can we measure effectiveness of travel plans at new residential developments?



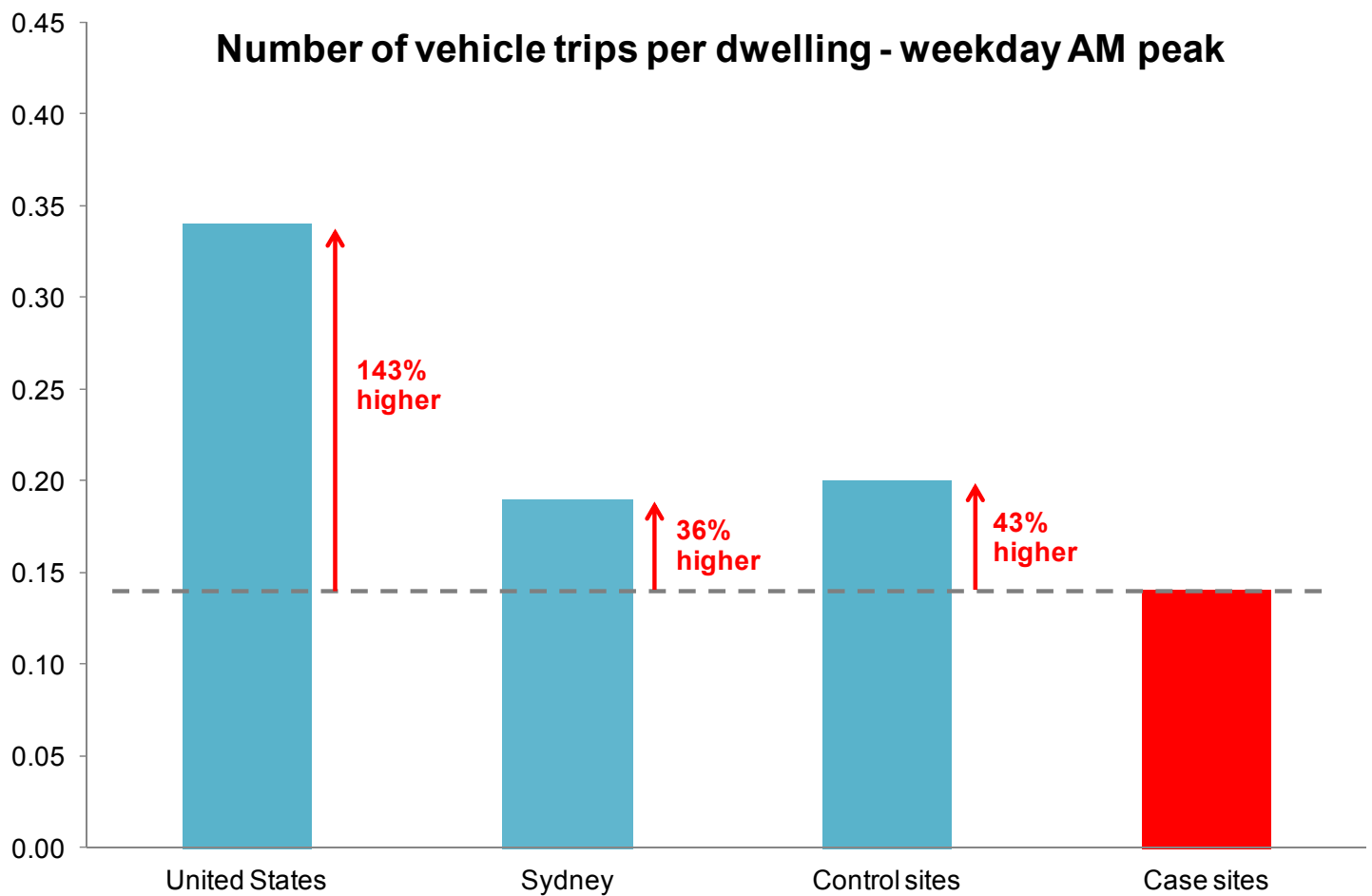
Measuring effectiveness of travel plans for new residential developments

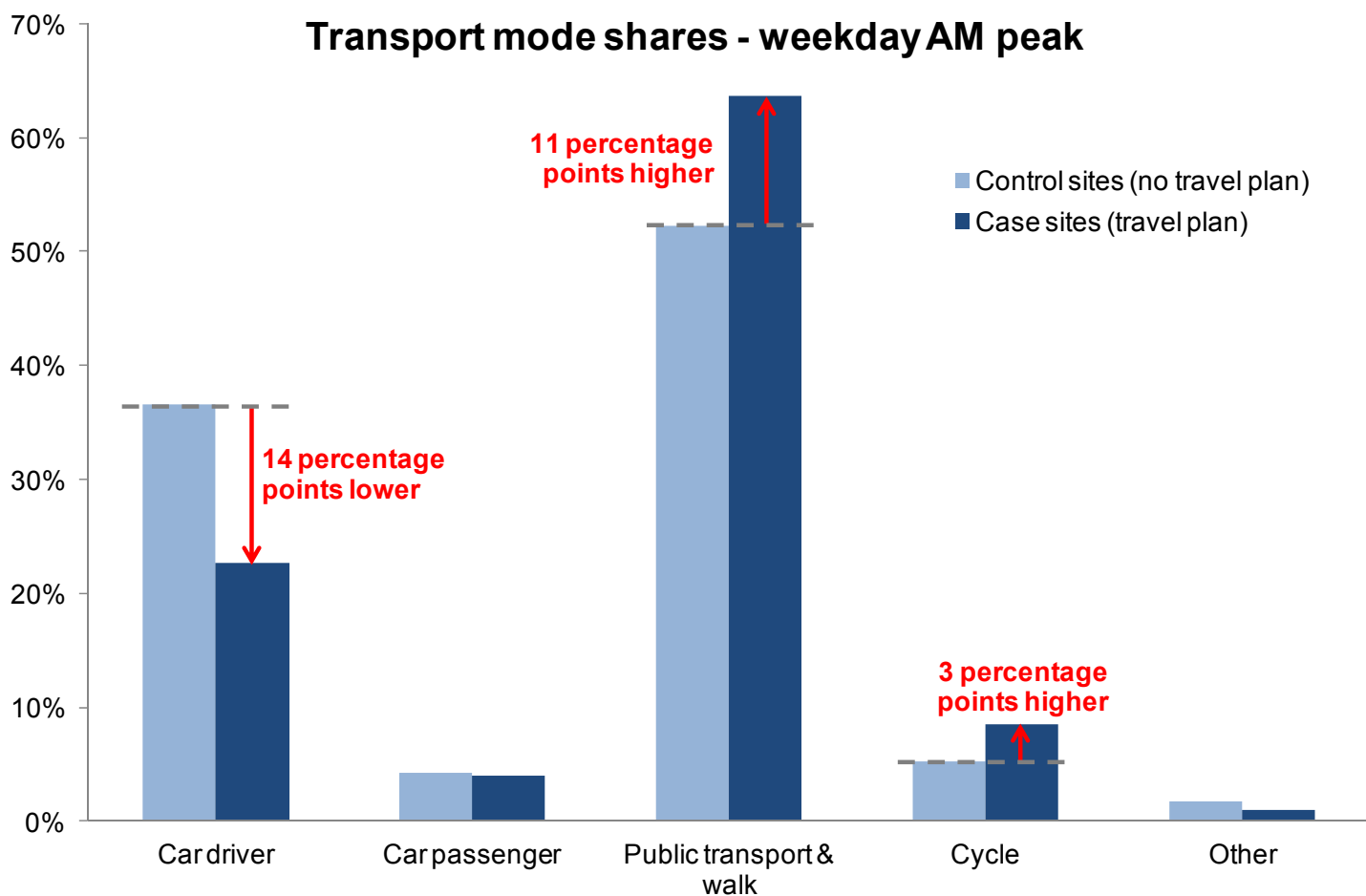
- Count of people entering & leaving developments, by transport mode
- Count of car parking supply and demand
- Counts conducted at:
 - **Case sites:** developments with travel plans
 - **Control sites:** developments without travel plans
- Comparisons to published vehicle trip generation rates
- Comparison between case and control sites

Case sites



Control sites





Background

Definition

Issues

Effectiveness

Car & bicycle parking utilisation

	Avg cars parked/dwelling	Avg bikes parked/dwelling
Control sites	0.55	0.43
Case sites	0.42	0.73

- Less cars & more bikes per dwelling at case sites

	% car parking spaces used	% bike parking spaces used
Control sites	52%	98%
Case sites	68%	102%

- More efficient utilisation of parking facilities at case sites
- Over supply of car parking and under supply of bike parking

Take home messages

- **What is a travel plan?**

Strategy containing a package of tailored initiatives and facilities that encourage the use of more sustainable forms of transport

- **What are some of the issues in requiring them?**

Monitoring & enforcement, implementation, quality, expectations

- **How effective are they?**

Up to 14% less car use when compared to similar (control) sites

Contact details



Dr Chris De Gruyter
Research Fellow
Institute of Transport Studies
Monash University
Victoria, Australia
Ph. +61 3 9905 3894
chris.degruyter@monash.edu